

## The first and only in-Kingdom pipe support manufacturer and field services provider

### PG1: Constant Hangers and Supports

Constant Supports are used to support pipework or equipment with an essentially constant supporting effort during what may be large vertical movement. If the change in supporting effort which occurs when using variable effort supports is unacceptable, or if the amount of travel provided by variable supports is insufficient, constant supports should be specified.



### PG2: Spring Hangers and Supports

Variable Supports are used to support the weight of pipework or equipment whilst allowing a degree of movement relative to the supporting structure. A typical application is when pipes transport hot (or cold) liquids or gases which are expanding (or contracting) due to the difference between operating and ambient temperatures.



### PG3: Rigid Struts & Snubbers

Dynamic loading requiring the use of rigid struts and snubbers may occur for a number of reasons. A typical application is water hammer caused by sudden valve closure thus producing dynamic forces. Another case, is in an earthquake where a piping system is subject to dynamic forces.



### PG4: Pipe Connection Parts & U Bolts

Pipe clamps, clamp bases, weld-on lugs, and U-bolts are essential pipe connection components. These components must cover the highest level loads in the practical field of application. For example, in high temperature piping systems stresses are very high and all connection components must be of high quality.



### PG5: PTFE slide bearings, Saddles & Cryogenic Supports

Pipe bearings and saddle components are ideal as supports for piping systems arranged horizontally over long stretches. In order to allow normal thermal movement, the support points are designed as either sliding or roller types. Cryogenic pipe supports are used in cold temperature applications. These supports are made of High-Density Polyurethane Foam (HD PUF). Anchors and stops can be supplied with fitted spools, ready for installation on site.



### PG6: Connecting Elements

Connecting Elements are the hardware that complement spring supports and together allow the transfer of pipe weight and expansion forces to the building load bearing structure. These include threaded connecting elements like clevises, turnbuckles, eye nuts, rod couplers, and hanger rods. All components are drop forged, and (apart from turnbuckles) designed to allow slight length adjustments. This allows for precise fit up despite their limited installation height.



### PG7: Structural Attachments, Trapezes

The attachment of pipe supports to the load-bearing structure is achieved by special components that are welded or clamped. The safety of the connections depends on their particular suitability in each case.



### PG8: BERGATHERM

Bergatherm is range of Composite blocks, manufactured by KEKSA, using high strength glass fabrics and specially formulated epoxy resin and developed for cryogenic and other similar and demanding applications.



### Customized Supports

KEKSA offers wide range of engineering solutions to our customers. We are also capable of designing and delivering customized pipe supports as per project requirements. We are equipped to meet the special surface protection requirements of projects.



Head Office: AMCDE Building, Prince Sultan Bin Abdulaziz Road  
P.O. Box:3594, Al Khobar 31952, K.S.A

Plant: Support Industries Area 3 Jubail 1 Section N, Block 9, Lot No. 10 Road No. 267 , Al-Jubail - K.S.A

Tel: +966 (13) 341 8899 Ext. 129 / 145 / 150 | Fax: +966 (13) 341 7799

E-mail: [info@keksa.com](mailto:info@keksa.com) , [sales@keksa.com](mailto:sales@keksa.com) | [www.keksa.com](http://www.keksa.com)

The first and only in-Kingdom pipe support manufacturer and field services provider

## Field Services

### Field Survey & Inspection

To avoid costly damage and operational breakdown our engineers conduct regular inspection of piping system and the condition of supports. We produce comprehensive report and provide the appropriate recommendations for a solution, when needed.

### Installation & Commissioning

Most pipe stresses are due to mistakes made during installation and commissioning. Our engineers will supervise the installation of pipe supports, deblock, commission the supports, conduct load and travel checks after commissioning.

### Testing & Maintenance

Our engineers conduct repairs based on inspection findings and carry out preventive maintenance during planned shutdown to ensure the mechanical integrity and functionality of supports. Our engineers can also calibrate spring supports at our testing facility.

GIVING YOU THE BEST PIPING SYSTEMS SUPPORT

Field Survey & Inspection



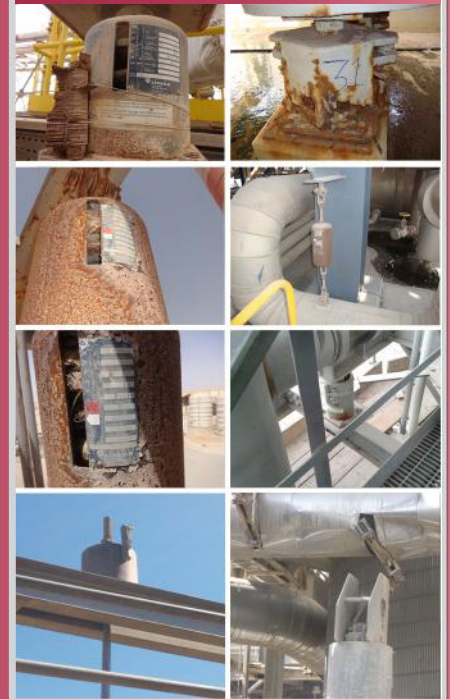
Installation & Commissioning



Testing & Maintenance



The faults most frequently noted in pipe supports



Head Office: AMCDE Building, Prince Sultan Bin Abdulaziz Road  
P.O. Box:3594, Al Khobar 31952, K.S.A

Plant: Support Industries Area 3 Jubail 1 Section N, Block 9, Lot No. 10 Road No. 267 , Al-Jubail - K.S.A

Tel: +966 (13) 341 8899 Ext. 129 / 145 / 150 | Fax: +966 (13) 341 7799

E-mail: [info@keksa.com](mailto:info@keksa.com) , [sales@keksa.com](mailto:sales@keksa.com) | [www.keksa.com](http://www.keksa.com)